

# MONTHLY MEMBERSHIP PROGRESS REPORT

District 14 B

Results as of: 3/31/2024

GMT:

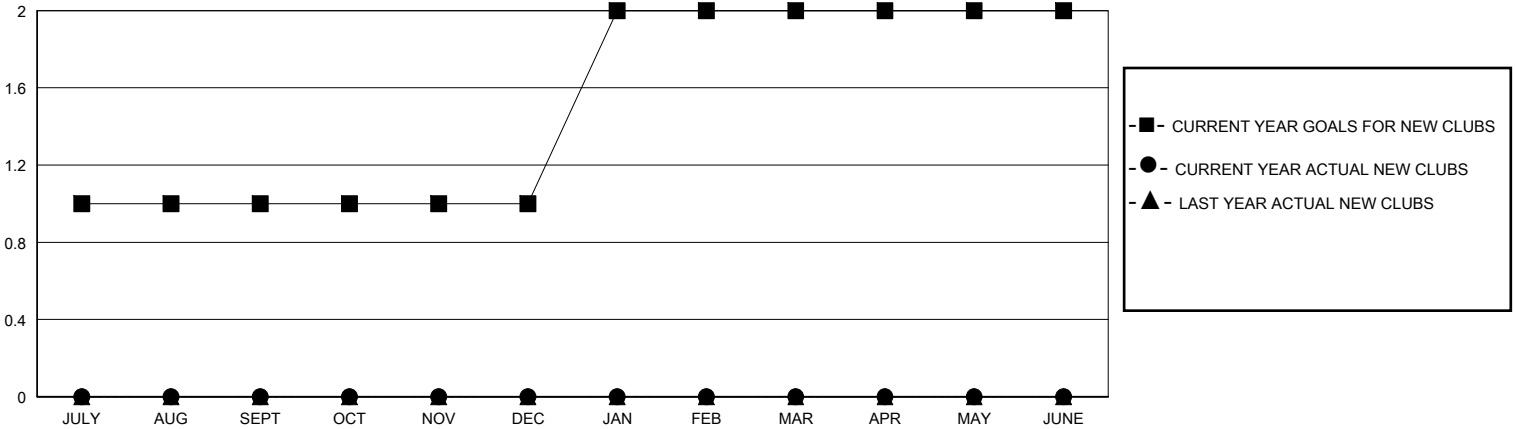
LOCATION PENNSYLVANIA

GMT CA

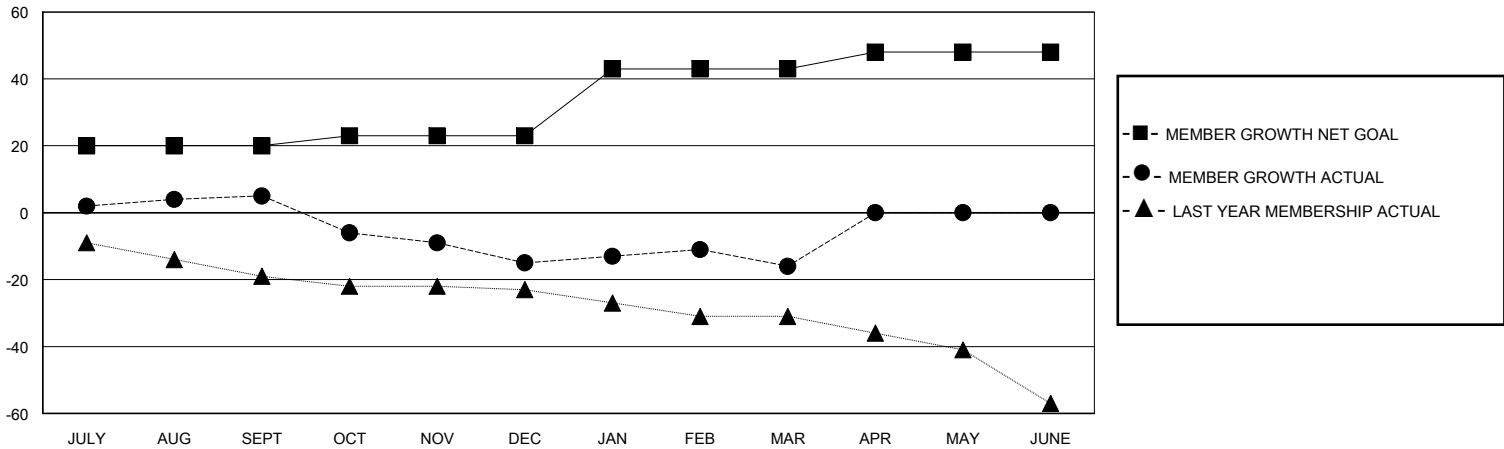
Clubs			
RESULTS FOR 2023-2024			
QUARTER	NEW CLUB GOAL	NEW CLUBS	DROPPED CLUBS
JULY/AUG/SEPT	1	0	0
OCT/NOV/DEC	0	0	0
JAN/FEB/MAR	1	0	0
APR/MAY/JUNE	0	0	0

Members			
RESULTS FOR 2023-2024			
QUARTER	MEMBER GROWTH NET GOAL	MEMBER GROWTH ACTUAL	DROPPED MEMBERS ACTUAL (including transfers)
JULY/AUG/SEPT	20	18	13
OCT/NOV/DEC	3	7	25
JAN/FEB/MAR	20	19	20
APR/MAY/JUNE	5	0	0

GOALS AND ACTUAL NEW CLUBS CUMULATIVE



GOALS AND ACTUAL MEMBERS CUMULATIVE



DROPPED CLUBS: 0	16 CLUBS OF 31 ADDED 1 OR MORE NEW MEMBERS	<b>GENDER DISTRIBUTION</b> MALE 407 (62.33%) FEMALE 246 (37.67%)
<b>DROPPED MEMBERS</b> DECEASED 13 CLUB CANCELLED 0 OTHER 45 TOTAL 58	<a href="#">CLICK HERE FOR CUMULATIVE MEMBERSHIP DATA</a>	TOTAL FAMILY UNIT MEMBERS 102 FAMILY MEMBERS PAYING HALF DUES 51